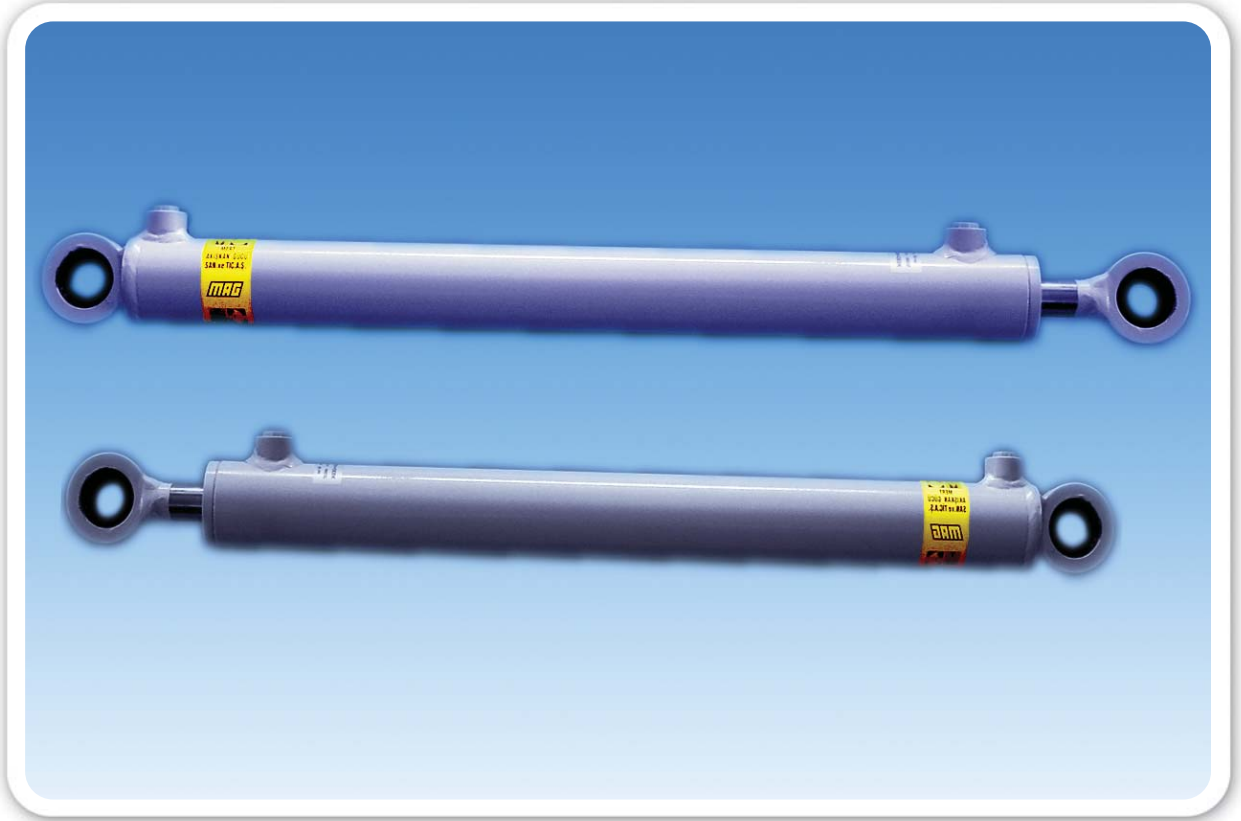


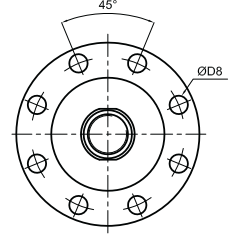
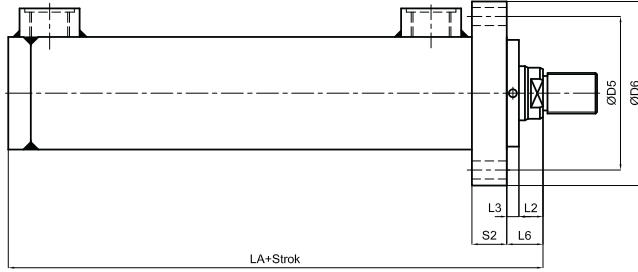
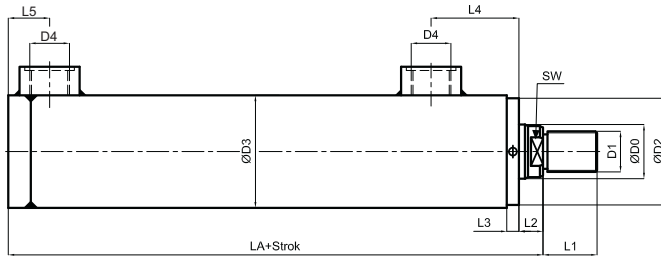
# Hidrolik Silindir (Tarım Tipi) Hydraulic Cylinder (Agricultural Type)

Silindirler / Cylinders



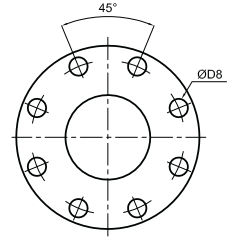
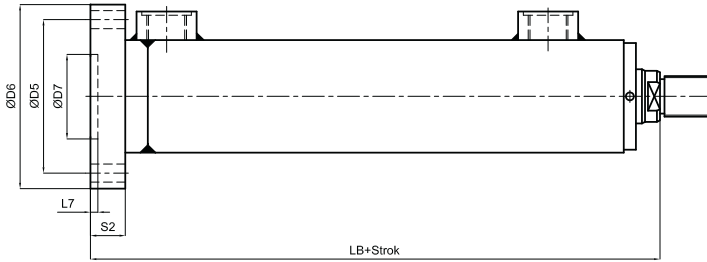
**THS** - ... / ... - ... - ... - ... - ... - ... - ...

Piston Çapı Piston Diameter		Strok / Stroke		Bağlantı Şekli / Mountings		Ck 45 Krom kaplı Ck 45 chrome plated piston rod	
40, 50, 63, 80, 100, 125, 160, 200		ÖFB	Ön flanş bağlantı / Front flange mounting	AFB	Arka flanş bağlantı / Rear flange mounting	RH	Piston mili sertleştirilmiş ve krom kaplı Hardened and chrome plated piston rod
		AEB	Arka eklem bağlantı / Rear swivel flange mounting	AEBK	Küresel arka eklem bağlantı Rear swivel flange mounting with spherical bearing	RS	Piston mili paslanmaz Stainless steel piston rod
		ÖEB	Ön eklem bağlantı / Piston rod swivel mounting	ÖEBK	Küresel ön eklem bağlantı Piston rod swivel mounting with spherical bearing		NBR + PU
		OEB	Orta eklem bağlantı / Central trunnion mounting	AB	Ayak bağlantı / Foot mounting	SV	Viton sızdırmazlık elemanı Viton Seal



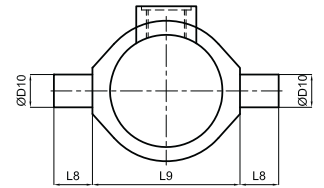
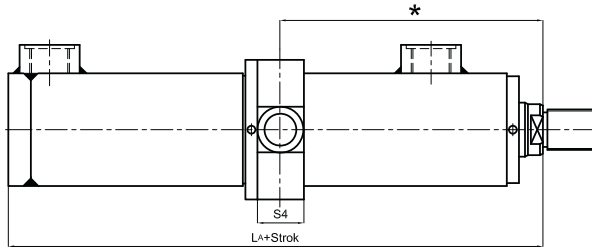
### ÖN FLANŞ BAĞLANTI

Front flange mounting



### ARKA FLANŞ BAĞLANTI

Rear flange mounting



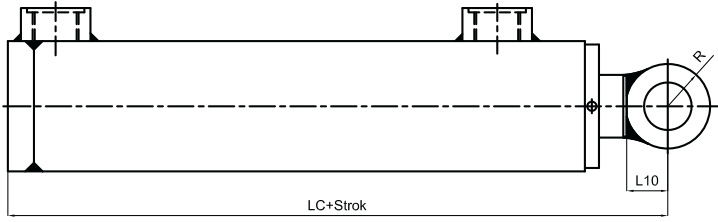
### ORTA EKLEM BAĞLANTI

Trunnion mounting

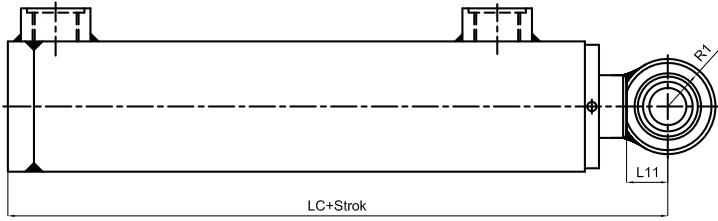
\* Bu ölçü müşteri isteğine ve stroğa bağlı olarak değişir.

\* This dimension will change according to the stroke and customer needs.

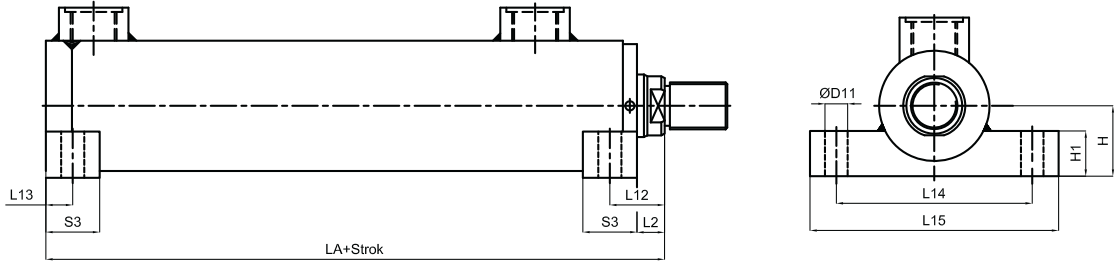
<b>MRE</b>	ØD0 f7	D1	ØD2 f8	ØD3	D4	ØD5 js13	ØD6	ØD7 H8	ØD8 H13	ØD9 H9	ØD10 f8	ØD11 H13	ØD12 H7	L1	L2	L3	L4	L5	L6	L7 min.
<b>THS-40</b>	22	M16x1,5	48	50	G1/4"	85	108	48	9	20	20	11	20	22	13	8	44	20	21	3
<b>THS-50</b>	28	M20x1,5	58	60	G3/8"	100	128	58	11	25	25	13	25	28	14	10	54	20	24	4
<b>THS-63</b>	36	M27x2	73	75	G1/2"	120	148	73	14	32	32	13	30	36	16	10	60	27.5	26	4
<b>THS-80</b>	45	M33x2	89	95	G1/2"	150	188	89	18	40	40	17	40	45	18	10	65	30.5	28	4
<b>THS-100</b>	56	M42x2	113	115	G3/4"	180	218	113	22	50	50	21	50	56	20	12	67.5	27.5	32	5
<b>THS-125</b>	70	M48x2	138	145	G3/4"	200	238	138	22	63	63	25	60	63	23	13	82.5	32.5	36	5
<b>THS-160</b>	90	M64x3	178	180	G1"	240	288	178	22	80	80	30	80	85	25	15	93	45	40	5
<b>THS-200</b>	110	M80x3	217	230	G1"	295	340	217	26	100	100	33	100	95	30	15	105	50	45	5



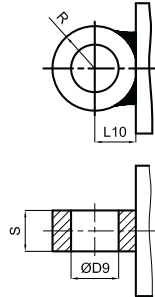
**ÖN EKLEM BAĞLANTI**  
Piston rod swivel mounting



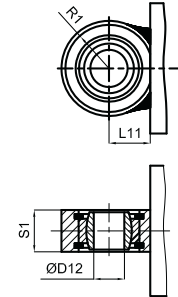
**KÜRESEL ÖN EKLEM BAĞLANTI**  
Piston rod swivel mounting with spherical bearing



**AYAK BAĞLANTI**  
Foot mounting



**ARKA EKLEM BAĞLANTI**  
Swivel flange mounting



**KÜRESEL ARKA EKLEM BAĞLANTI**  
Swivel flange mounting

<b>MPC</b>	L8 js13	L9 h12	L10	L11	L12	L13	L14 js13	L15	LA	LB	LC	H h10	H1	R	R1	S h14	S1 h12	S2 js13	S3 js13	S4	SW
<b>THS-40</b>	16	90	23.5	26	23	10	88	108	122	136	146	30	19	24.5	27	20	20	14	20	30	17
<b>THS-50</b>	20	105	26	31	26.5	12.5	105	130	140	156	169	36	24	27	32	25	25	16	25	35	22
<b>THS-63</b>	25	120	33	38	28.5	12.5	120	150	161	181	198	46	28	34	39	32	32	20	25	45	30
<b>THS-80</b>	32	135	43	46.5	35.5	17.5	155	195	185	210	232	56	32	44	47.5	40	40	25	35	55	36
<b>THS-100</b>	40	160	53	56.5	40	20	185	230	176	201	233	68	38	54	57.5	50	50	25	40	65	46
<b>THS-125</b>	50	195	63	69	48	25	220	270	199	231	268	85	44	64	70	63	63	32	50	80	60
<b>THS-160</b>	63	240	83	89	57.5	32.5	280	340	238	274	327	105	54	84	90	80	80	36	65	100	75
<b>THS-200</b>	80	295	98	113	69	39	345	425	285	325	398	135	64	99	115	100	100	40	78	115	100

## TEKNİK ÖZELLİKLER / TECHNICAL SPECIFICATIONS

ÇALIŞMA BASINCI <i>Operating Pressure</i>	: 160 BAR, 250BAR (İSTEĞE BAĞLI) <i>(Optional)</i>	MAX. PİSTON HIZI <i>Max. Piston speed</i>	: 0.5 m/s
STANDART STROKLAR <i>Standard stroke</i>	: 50, 100, 160, 200, 300, 400, 500	ÇALIŞMA SICAKLIĞI <i>Operating temperature</i>	: Min.-20°C Max.+80°C
AKIŞKAN TÜRÜ <i>Fluid Type</i>	: MINERAL YAĞLAR <i>: Mineral oils</i>	VİZKOZİTE / <i>Viscosity</i>	: 5 Cst - 300 Cst
SIZDIRMAZLIK ELEMANLARI <i>Seals</i>	: NBR + PU	SİLİNDİR BORUSU <i>Cylinder tube</i>	: St 52 BK + S HONLANMIŞ <i>: St 52 BK + Honed</i>
PİSTON MİLİ / <i>Piston rod</i>	: Ck 45 KROM KAPLI / <i>Ck 45 Chrome plated</i>		

### A-A KESİTİ / SECTION A-A

**THS**

(Tarım Tip Hidrolik Silindir)

(Agricultural Type Hydraulic Cylinder)

(40-50-63-80-100-125-160-200)

