

Hidrolik Silindir (Tarım Tipi)

Hydraulic Cylinder (Agricultural Type)

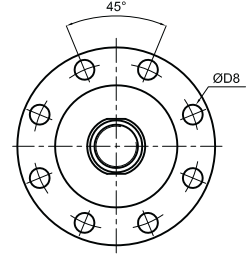
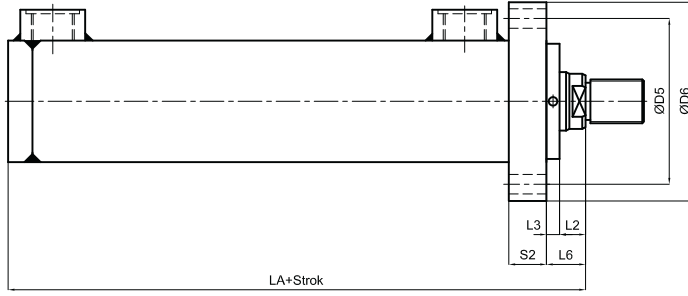
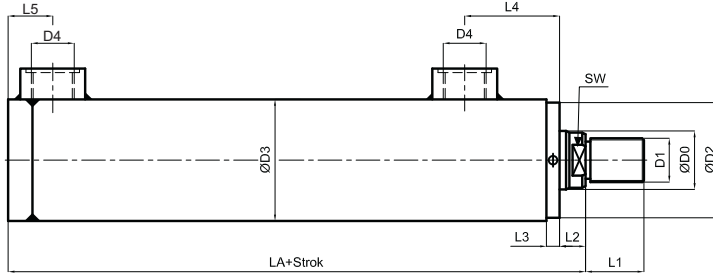
Silindirler / Cylinders

MAG®



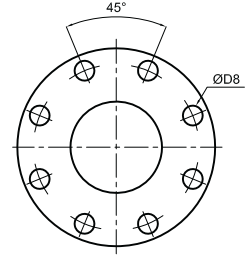
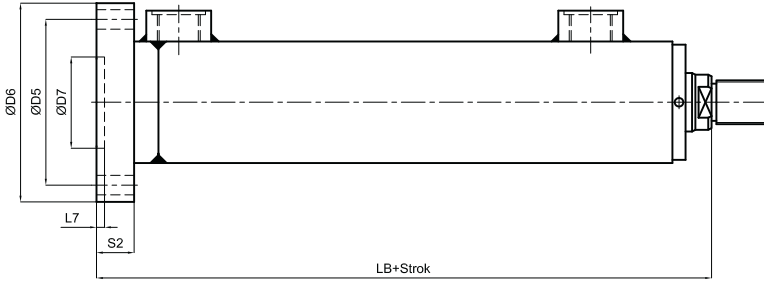
THS - ... / ... - ... - ... - ... - ... - ...

Piston Çapı Piston Diameter		Strok / Stroke		Bağlantı Şekli / Mountings		Ck 45 Krom kaplı Ck 45 chrome plated piston rod	
40, 50, 63, 80, 100, 125, 160, 200		ÖFB	Ön flanş bağlantı / Front flange mounting	AFB	Arka flanş bağlantı / Rear flange mounting	RH	Piston mili sertleştirilmiş ve krom kaplı Hardened and chrome plated piston rod
		AEB	Arka eklem bağlantı / Rear swivel flange mounting	AEBK	Küresel arka eklem bağlantı Rear swivel flange mounting with spherical bearing	RS	Piston mili paslanmaz Stainless steel piston rod
		ÖEB	Ön eklem bağlantı / Piston rod swivel mounting	ÖEBK	Küresel ön eklem bağlantı Piston rod swivel mounting with spherical bearing		NBR + PU
		OEB	Orta eklem bağlantı / Central trunnion mounting	AB	Ayak bağlantı / Foot mounting	SV	Viton sızdırmazlık elemanı Viton Seal



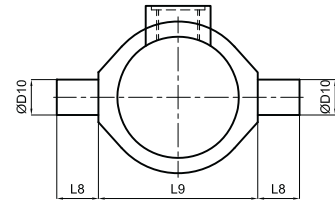
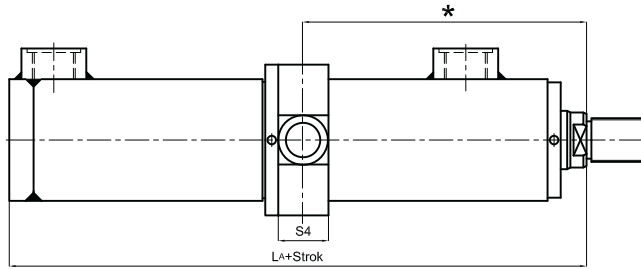
ÖN FLANŞ BAĞLANTI

Front flange mounting



ARKA FLANŞ BAĞLANTI

Rear flange mounting



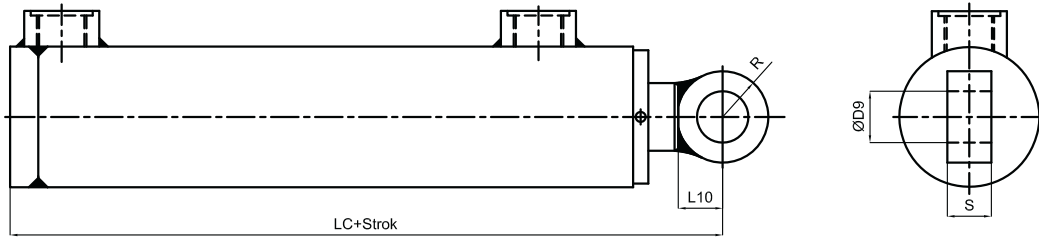
ORTA EKLEM BAĞLANTI

Trunnion mounting

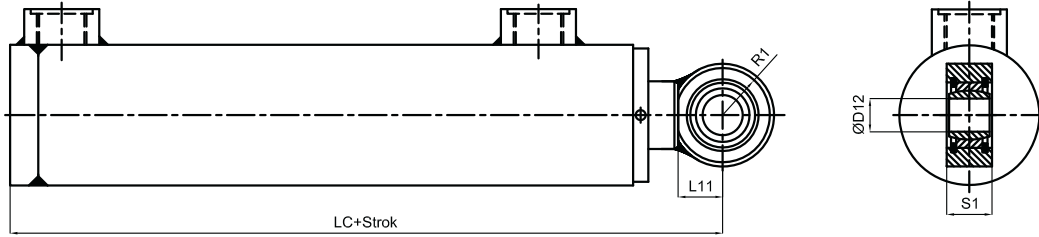
* Bu ölçü müşteri isteğine ve stroğa bağlı olarak değişir.

* This dimension will change according to the stroke and customer needs.

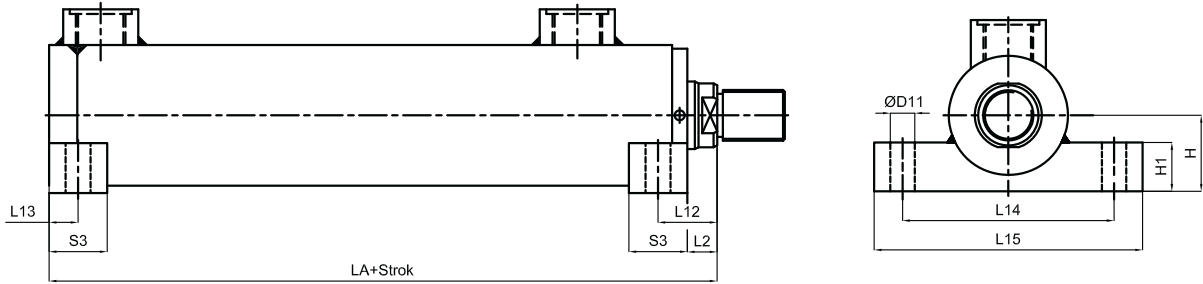
MAG	ØD0 f7	D1	ØD2 f8	ØD3	D4	ØD5 js13	ØD6	ØD7 H8	ØD8 H13	ØD9 H9	ØD10 f8	ØD11 H13	ØD12 H7	L1	L2	L3	L4	L5	L6	L7 min.
THS-40	22	M16x1,5	48	50	G1/4"	85	108	48	9	20	20	11	20	22	13	8	44	20	21	3
THS-50	28	M20x1,5	58	60	G3/8"	100	128	58	11	25	25	13	25	28	14	10	54	20	24	4
THS-63	36	M27x2	73	75	G1/2"	120	148	73	14	32	32	13	30	36	16	10	60	27.5	26	4
THS-80	45	M33x2	89	95	G1/2"	150	188	89	18	40	40	17	40	45	18	10	65	30.5	28	4
THS-100	56	M42x2	113	115	G3/4"	180	218	113	22	50	50	21	50	56	20	12	67.5	27.5	32	5
THS-125	70	M48x2	138	145	G3/4"	200	238	138	22	63	63	25	60	63	23	13	82.5	32.5	36	5
THS-160	90	M64x3	178	180	G1"	240	288	178	22	80	80	30	80	85	25	15	93	45	40	5
THS-200	110	M80x3	217	230	G1"	295	340	217	26	100	100	33	100	95	30	15	105	50	45	5



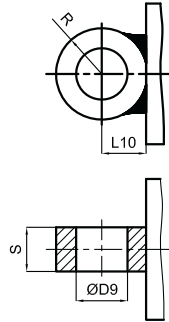
ÖN EKLEM BAĞLANTI
Piston rod swivel mounting



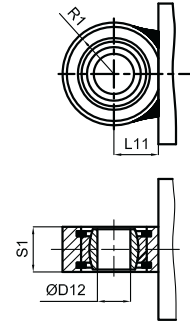
KÜRESEL ÖN EKLEM BAĞLANTI
Piston rod swivel mounting with spherical bearing



AYAK BAĞLANTI
Foot mounting



ARKA EKLEM BAĞLANTI
Swivel flange mounting



KÜRESEL ARKA EKLEM BAĞLANTI
Swivel flange mounting

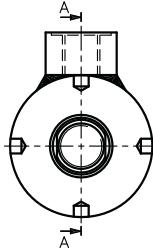
MRE	L8 js13	L9 h12	L10	L11	L12	L13	L14 js13	L15	LA	LB	LC	H h10	H1	R	R1	S h14	S1 h12	S2 js13	S3 js13	S4	SW
THS-40	16	90	23.5	26	23	10	88	108	122	136	146	30	19	24.5	27	20	20	14	20	30	17
THS-50	20	105	26	31	26.5	12.5	105	130	140	156	169	36	24	27	32	25	25	16	25	35	22
THS-63	25	120	33	38	28.5	12.5	120	150	161	181	198	46	28	34	39	32	32	20	25	45	30
THS-80	32	135	43	46.5	35.5	17.5	155	195	185	210	232	56	32	44	47.5	40	40	25	35	55	36
THS-100	40	160	53	56.5	40	20	185	230	176	201	233	68	38	54	57.5	50	50	25	40	65	46
THS-125	50	195	63	69	48	25	220	270	199	231	268	85	44	64	70	63	63	32	50	80	60
THS-160	63	240	83	89	57.5	32.5	280	340	238	274	327	105	54	84	90	80	80	36	65	100	75
THS-200	80	295	98	113	69	39	345	425	285	325	398	135	64	99	115	100	100	40	78	115	100

TEKNİK ÖZELLİKLER / TECHNICAL SPECIFICATIONS

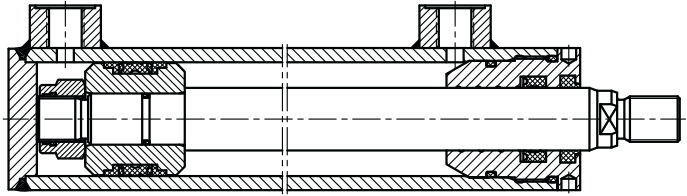
ÇALIŞMA BASINCI <i>Operating Pressure</i>	: 160 BAR, 250BAR (İSTEĞE BAĞLI) <i>(Optional)</i>	MAX. PİSTON HIZI <i>Max. Piston speed</i>	: 0.5 m/s
STANDART STROKLAR <i>Standard stroke</i>	: 50, 100, 160, 200, 300, 400, 500	ÇALIŞMA SICAKLIĞI <i>Operating temperature</i>	: Min.-20°C Max.+80°C
AKIŞKAN TÜRÜ <i>Fluid Type</i>	: MINERAL YAĞLAR <i>Mineral oils</i>	VİZKOZİTE / <i>Viscosity</i>	: 5 Cst - 300 Cst
SIZDIRMAZLIK ELEMANLARI <i>Seals</i>	: NBR + PU	SİLİNDİR BORUSU <i>Cylinder tube</i>	: St 52 BK + S HONLANMIŞ <i>St 52 BK + Honed</i>
PİSTON MİLİ / <i>Piston rod</i>	: Ck 45 KROM KAPLI / <i>Ck 45 Chrome plated</i>		

THS

(Tarım Tip Hidrolik Silindir)
(Agricultural Type Hydraulic Cylinder)
(40-50-63-80)

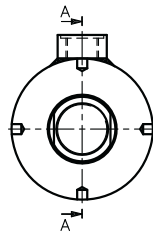


A-A KESİTİ / SECTION A-A



THS

(Tarım Tip Hidrolik Silindir)
(Agricultural Type Hydraulic Cylinder)
(100-125-160-200)



A-A KESİTİ / SECTION A-A

