

Çelik Gövdeli Pnömatik Silindir

Steel Body Pneumatic Cylinder

Silindirler / Cylinders

MAG®



(CETOP RP 53P STANDARDI)
(RP 53P Standard)

NS

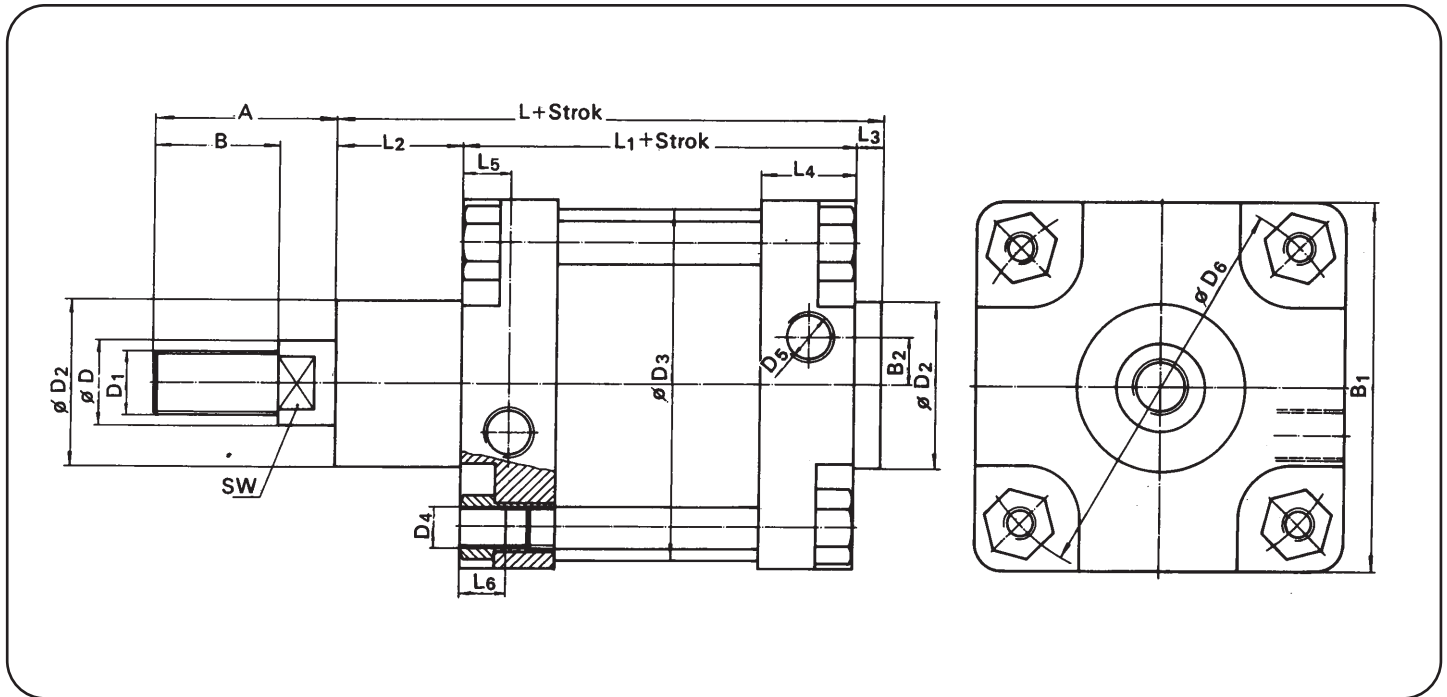
Silindir Kodu Cylinder Code	
NS	Çift Etkili / Double acting
NSY	Yastıklı Double acting with cushioning
NST	Tek Etkili / Single acting

Piston Çapı Piston Diameter
125
160
200
250
320

Standart Strok Standard Strokes
50, 100, 160, 200, 300, 400, 500

Bağlantı Şekli / Mountings	
AB	Ayak Bağlantı / Foot mounting
FB	Flanş Bağlantı / Flange mounting
EB	Eklem Bağlantı / Swivel flange mounting
EYB	Eklem Yer Bağlantı Swivel flange mounting with clevis foot
ÇB	Çatal Bağlantı / Piston rod clevis mounting

Ölçüler / Dimensions



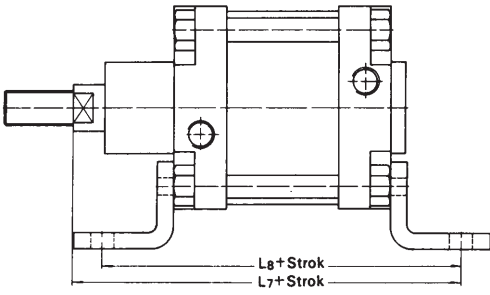
	A	B	B ₁	B ₂	B ₃	B ₄	B ₅	B ₆	C	C ₁	C ₂	C ₃	D	D ₁	D ₂	D ₃
NS — 125 — ...	70	48	140	15	90	130	70	150	11	25	20	20	32	M 24 X 2	63	133
NS — 160 — ...	102	72	180	22	115	170	90	192	13	25	22	25	45	M 36 X 2	80	168
NS — 200 — ...	102	72	220	25	135	170	90	192	15	25	25	30	45	M 36 X 2	80	210
NS — 250 — ...	114	84	270	25	165	200	110	232	20	25	25	35	50	M 42 X 2	100	260
NS — 320 — ...	126	96	340	30	200	220	120	254	23	30	30	40	63	M 48 X 2	110	330

	D ₄	D ₅	D ₆	D ₇	D ₈	D ₉	E	E ₁	E ₂	E ₃	E ₄	E ₅	E ₆	F	F ₁	H
NS — 125 — ...	M12	R 1/2"	150	16	25	11	69	50	55	60	90	94	124	220	180	90
NS — 160 — ...	M14	R 3/4"	190	18	30	14	87	65	60	88	126	118	156	280	230	115
NS — 200 — ...	M16	R 3/4"	234	22	30	16	95	70	60	90	130	122	162	320	270	135
NS — 250 — ...	M20	R 1"	288	26	40	20	105	75	70	110	160	150	200	390	330	165
NS — 320 — ...	M24	R 1"	360	33	45	26	125	85	80	122	186	170	234	470	400	200

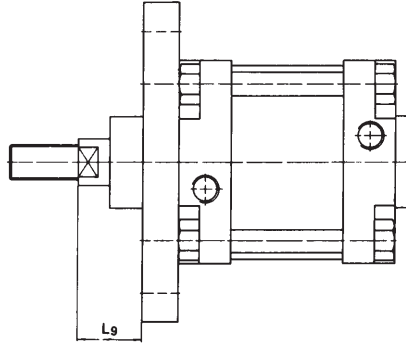
	H ₁	H ₂	L	L ₁	L ₂	L ₃	L ₄	L ₅	L ₆	L ₇	L ₈	L ₉	L ₁₀	L ₁₁	R	R ₁	SW
NS — 125 — ...	55	85	208	150	48	10	36	18	17	270	250	45	245	275	30	22,5	27
NS — 160 — ...	70	115	235	170	55	10	46	23	25	320	300	60	280	315	32	31,5	41
NS — 200 — ...	80	125	257	180	65	12	46	23	25	345	320	70	300	335	35	31,5	41
NS — 250 — ...	100	153	289	200	75	14	50	25	25	380	350	80	330	375	45	40	46
NS — 320 — ...	120	182	326	220	90	16	56	28	28	425	390	90	370	420	54	45	50

Bağlantı şekilleri / Mountings

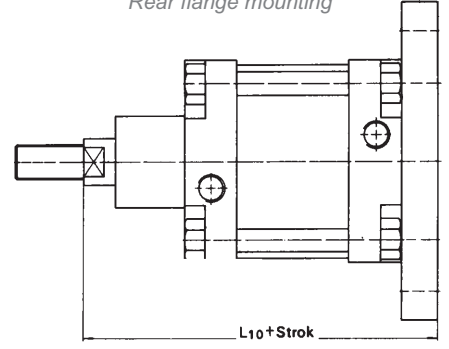
Ayak bağlantı
Foot mounting



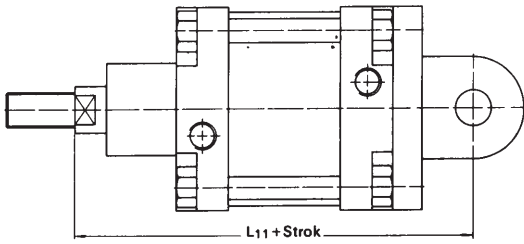
Ön flanş bağlantı / Front flange mounting



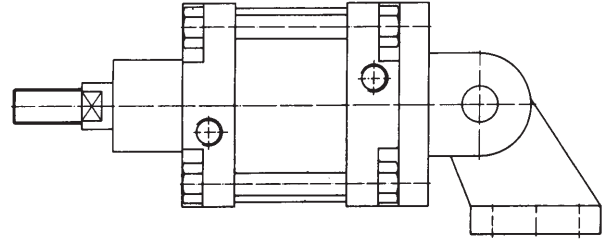
Arka flanş bağlantı
Rear flange mounting



Eklem bağlantı
Swivel flange mounting

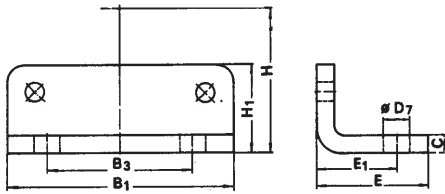


Eklem yer bağlantı
Swivel flange mounting with clevis foot

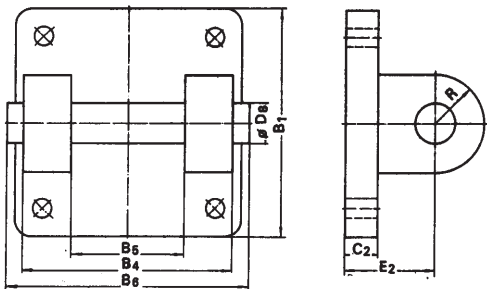


Bağlantı parçaları

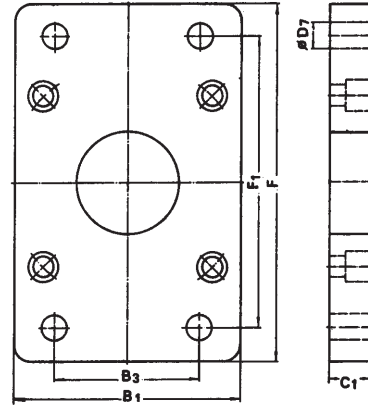
AB: Ayak bağlantı
Foot mounting



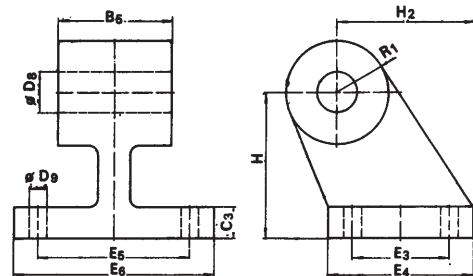
EB: Eklem bağlantı
Swivel flange mounting



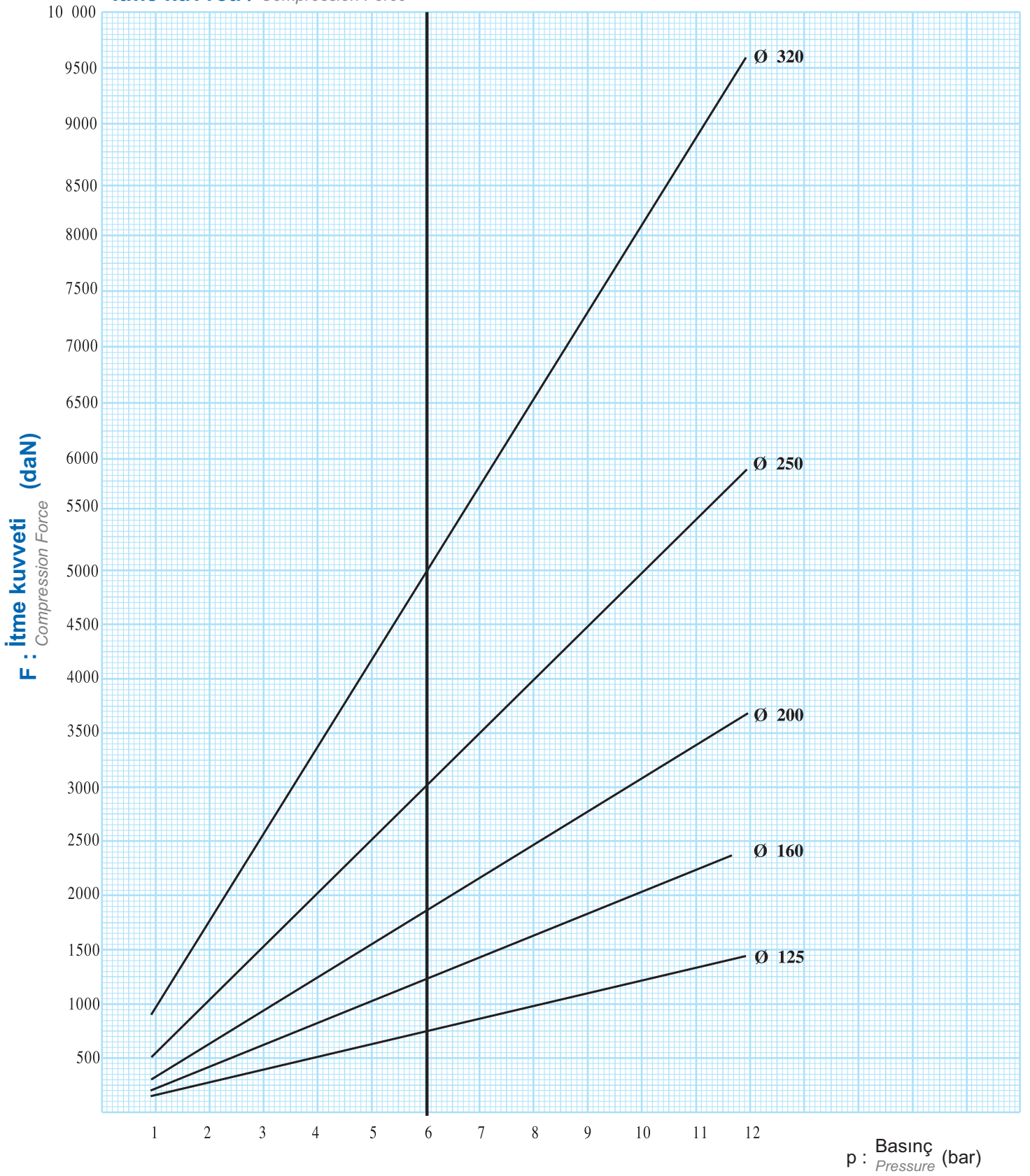
FB: Flanş bağlantı
Flange mounting



YB: Yer bağlantı
Clevis foot



İtme kuvveti / Compression Force



p : Basınç (bar)
Pressure