

# Çelik Gövdeli Pnömatik Silindir

## Steel Body Pneumatic Cylinder

Silindirler / Cylinders

# MAG®



## (CETOP RP 43P STANDARDI)

(RP 43P Standard)

NS . . . . . - . . . . . - . . . . .

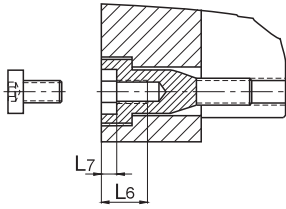
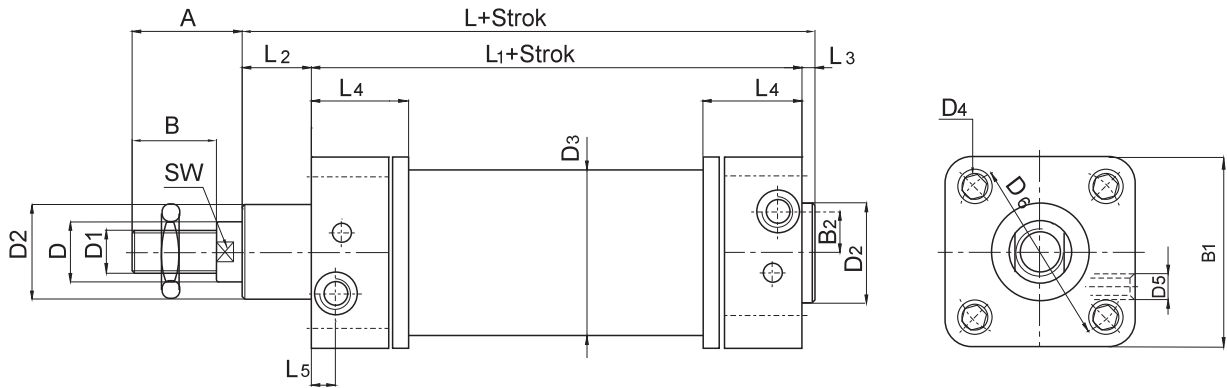
Silindir Kodu / Cylinder Code	
NS	Çift Etkili / Double acting
NSY	Çift Etkili Yastıklı Double acting with cushioning
NST	Tek Etkili / Single acting

Piston Çapı Piston Diameter
32,40,50,63, 80,100

Standart Stoklar Standard Strokes
50,100,160,200 300,400,500

Bağlantı Şekli / Mountings	
AB	Ayak Bağlantı / Foot mounting
FB	Flanş Bağlantı / Flange mounting
EB	Eklem Bağlantı / Swivel flange mounting
EYB	Eklem Yer Bağlantı Swivel flange mounting with clevis foot
ÇB	Çatal Bağlantı / Piston rod clevis mounting

# Ölçüler / Dimensions

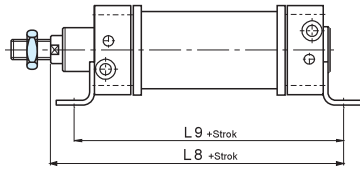


Yastıklama Boyu Cushioning Stroke	
NSY - 32 - ...	19
NSY - 40 - ...	21
NSY - 50 - ...	23
NSY - 63 - ...	23
NSY - 80 - ...	30
NSY - 100 - ...	30

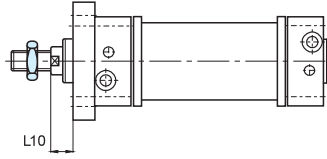
TEKNİK ÖZELLİKLER / TECHNICAL SPECIFICATIONS	
Silindir Gövdesi / Cylinder Tube	Çelik / Steel
Silindir Kapakları / Cylinder End Caps	Al. Enjeksiyon Döküm / Aluminum
Piston Mili / Piston Rod	CK 45 Krom Kaplı / CK 45 Chrome Plated
Sızdırmazlık Elemanları / Seals	NBR, Viton
Boğaz Keçesi / Rod Seal	Poliüretan / Polyurethane
Piston Keçesi / Piston Seal	NBR
O-Ring / O - Rings	NBR
Max. Çalışma Basıncı Max Operating Pressure	10 BAR
Çalışma Sıcaklığı Temperature Range	-20°C, +80°C

MAG	A	B	B <sub>1</sub>	B <sub>2</sub>	B <sub>3</sub>	B <sub>4</sub>	B <sub>5</sub>	B <sub>6</sub>	B <sub>7</sub>	C	C <sub>1</sub>	C <sub>2</sub>	C <sub>3</sub>	C <sub>4</sub>	D ø	D <sub>1</sub>	D <sub>2</sub> ø	D <sub>3</sub> ø
NS- 32-...	30	20	45		32	45	26	54	10	4	10	8	8	20	12	M10x1.25	30	37
NS- 40-...	34	24	54	4.5	36	52	28	62	12	5	10	9	10	24	16	M12x1.25	35	45
NS- 50-...	44	32	65	5.5	45	60	32	70	16	6	12	11	12	32	20	M16x1.5	40	55
NS- 63-...	44	32	80	13	50	70	40	82	16	6	15	12	12	32	20	M16x1.5	42	68
NS- 80-...	54	40	96	16	63	90	50	102	20	8	18	14	14	40	25	M20x1.5	48	86
NS-100-...	53	40	126	16	75	110	60	126	20	8	18	15	15	40	25	M20x1.5	50	108

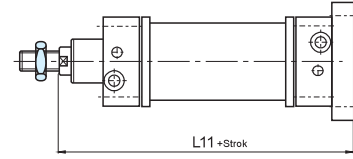
MAG	D <sub>4</sub>	D <sub>5</sub>	D <sub>6</sub> ø	D <sub>7</sub> ø	D <sub>8</sub> ø	D <sub>9</sub> ø	D <sub>10</sub> ø	D <sub>11</sub> ø	D <sub>12</sub> ø	E	E <sub>1</sub>	E <sub>2</sub>	E <sub>3</sub>	E <sub>4</sub>	E <sub>5</sub>	E <sub>6</sub>	E <sub>7</sub>	E <sub>8</sub>	E <sub>9</sub>	F	F <sub>1</sub>
NS- 32-...	M5	R1/8"	46	7	10	10	5.5	18	10	32	24	22	18	31	38	51	40	50	30	77	64
NS- 40-...	M5	R1/4"	56	9	12	10	5.5	22	12	38	28	25	22	35	41	54	50	62	37	90	72
NS- 50-...	M6	R1/4"	68	9	12	11	6.6	28	16	42	32	27	30	45	50	65	65	82	50	110	90
NS- 63-...	M6	R3/8"	84	9	16	11	6.6	28	16	50	35	35	35	50	52	67	65	82	50	125	100
NS- 80-...	M8	R3/8"	100	12	16	15	9	36	20	60	43	38	40	60	66	86	85	105	60	154	126
NS-100-...	M8	R1/2"	132	14	20	15	9	36	20	57	43	43	50	70	76	96	85	105	60	186	150



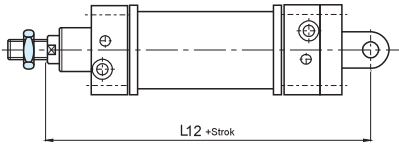
**Ayak bağlantı**  
Foot mounting



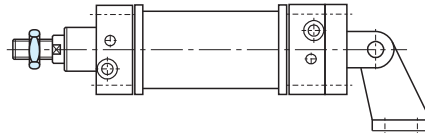
**Ön flanş bağlantı**  
Front flange mounting



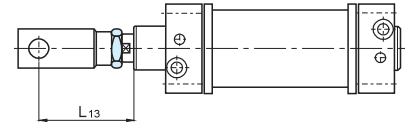
**Arka flanş bağlantı**  
Rear flange mounting



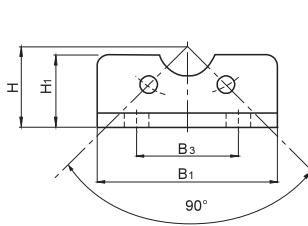
**Eklem bağlantı**  
Swivel flange mounting



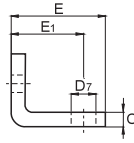
**Eklem yer bağlantı**  
Swivel flange mounting with clevis foot



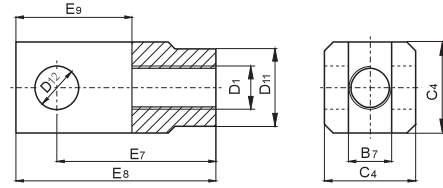
**Çatal bağlantı**  
Piston rod clevis mounting



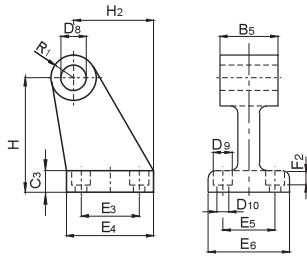
**AB: Ayak bağlantı**  
Foot mounting



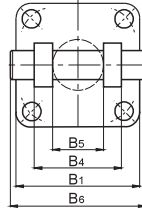
**YB: Yer bağlantı**  
Clevis foot



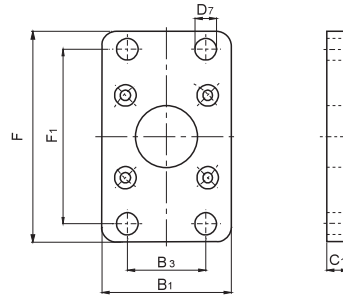
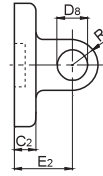
**ÇB: Çatal bağlantı**  
Piston rod clevis mounting



**YB: Yer bağlantı**  
Clevis foot



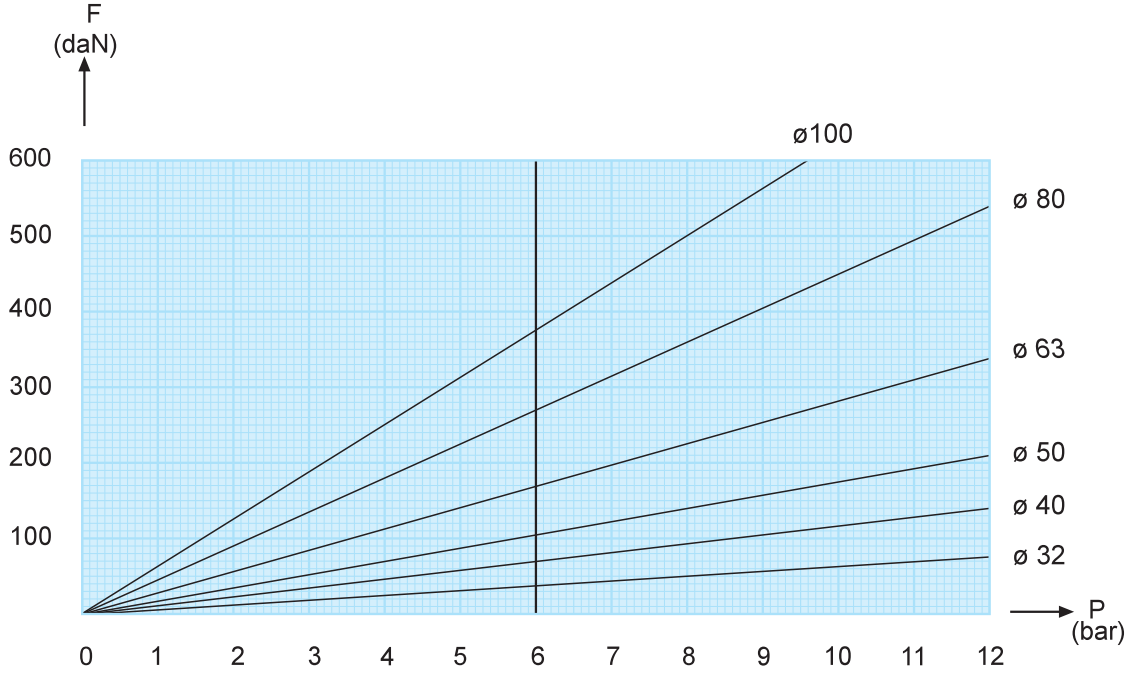
**EB: Eklem bağlantı**  
Swivel flange mounting



**FB: Flanş bağlantı**  
Flange mounting

F <sub>2</sub>	H	H <sub>1</sub>	H <sub>2</sub>	L	L <sub>1</sub>	L <sub>2</sub>	L <sub>3</sub>	L <sub>4</sub>	L <sub>5</sub>	L <sub>6</sub>	L <sub>7</sub>	L <sub>8</sub>	L <sub>9</sub>	L <sub>10</sub>	L <sub>11</sub>	L <sub>12</sub>	L <sub>13</sub>	R	R <sub>1</sub>	SW
5.7	32	24	27.5	114	94	16	4	38	9	13	5	144	142	16	130	142	56	10	10	10
5.7	36	25	30.5	130.5	105	20	5	38	11.5	13	5	163	161	20	145	160	66	13	11	13
6.8	45	32	40.5	136	106	25	5	38	11.5	13	5	175	170	25	155	170	84	16	13	17
6.8	50	36	44.5	149	115	28	6	45	14	13	5	190	185	25	170	190	84	18	15	17
9	63	47	57	164	124	34	6	48	14	16.5	6	215	210	30	190	210	108	18	15	22
9	71	54	65	181	134	40	7	55	16	16.5	6	230	220	35	205	230	107	23	19	22

## İtme kuvveti / Compression force :(daN)



$$F = p \times A - R$$

F : itme kuvveti / compression force (daN)

p : basınç / pressure (bar)

A : alan / area (cm)<sup>2</sup>

R : sürtünme kuvveti / friction force (daN)

## Ağırlık / Weight : (kg)

Silindir Çapı Piston diameter (Ø mm)	Strok=0 At 0 Stroke (kg)	Her 10 mm. strok için Weight per 10 mm. stroke	AB	FB	EB	YB
32	0,970	0,030	0,140	0,080	0,110	0,160
40	1,150	0,042	0,220	0,110	0,180	0,210
50	1,675	0,057	0,380	0,190	0,260	0,420
63	2,685	0,065	0,580	0,340	0,460	0,540
80	3,505	0,099	1,100	0,520	0,700	0,880
100	6,355	0,168	1,480	0,900	1,280	1,370