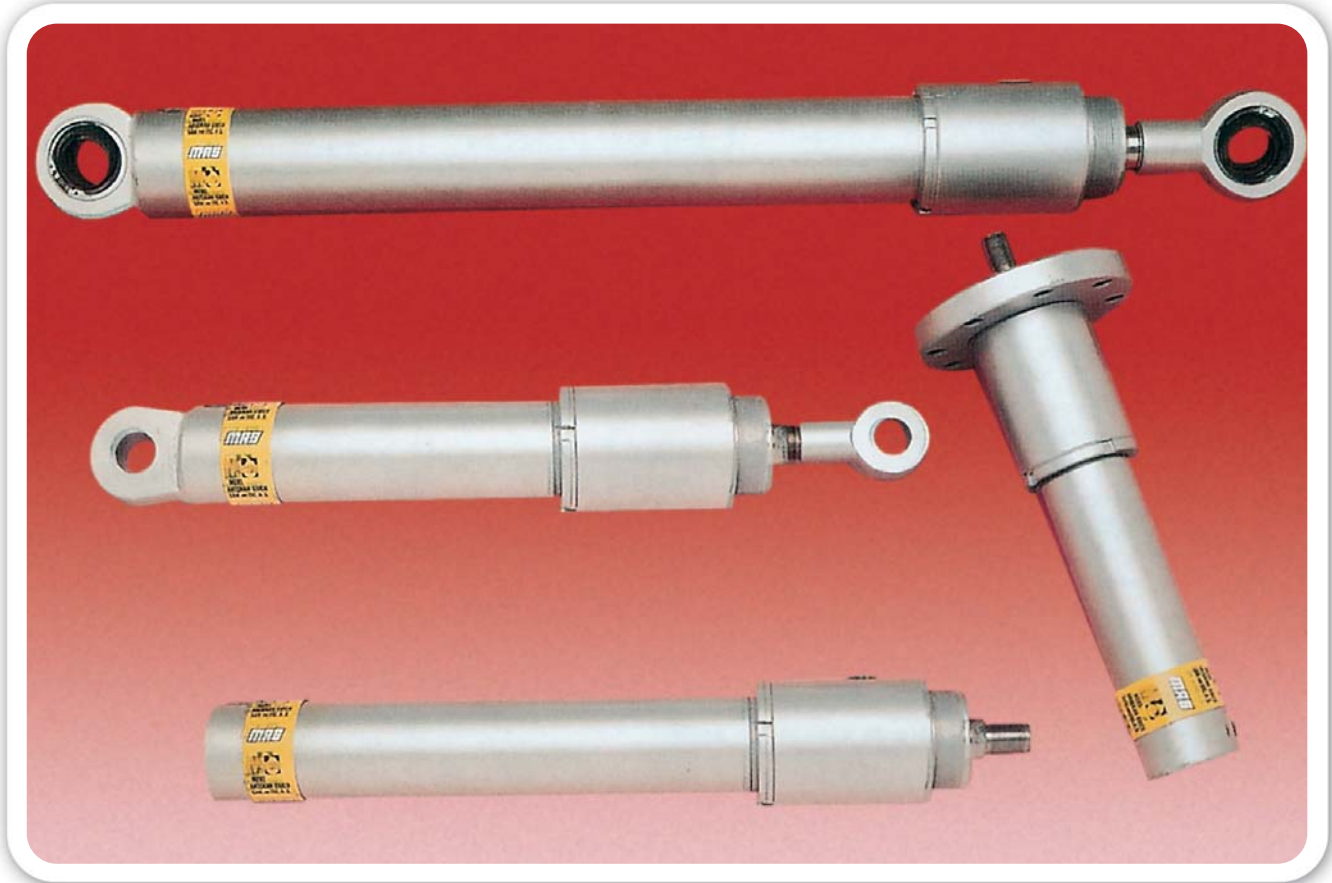


Hidrolik Silindir (Kompakt)

Hydraulic Cylinder (Compact)

Silindirler / Cylinders

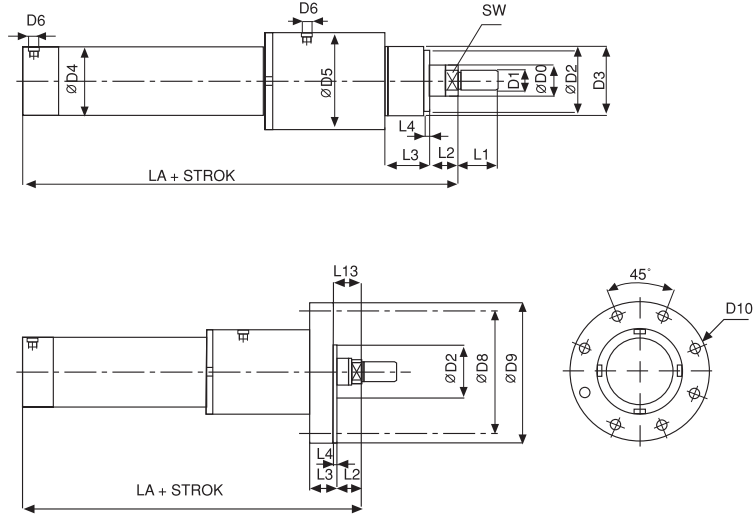
MAG



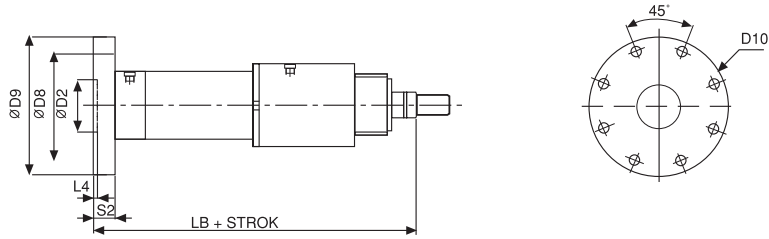
KHS

Strok / Stroke

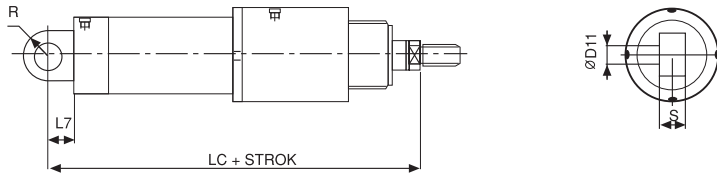
Standart / Standard		Piston Çapı Piston Diameter		Bağlantı Şekli / Mountings		RH	
Y	Yastıklı with cushioning	40, 50, 63, 80, 100, 125, 160, 200		ÖFB	Ön flanş bağlantı / Front flange mounting		Piston mili sertleştirilmiş ve krom kaplı Hardened and chrome plated piston rod
				AFB	Arka flanş bağlantı / Rear flange mounting	RS	Piston mili paslanmaz Stainless steel piston rod
				AEB	Arka eklem bağlantı / Rear swivel flange mounting		Ck 45 Krom kaplı Ck 45 chrome plated piston rod
				AEBK	Küresel arka eklem bağlantı Rear swivel flange mounting with spherical bearing		
				ÖEB	Ön eklem bağlantı / Piston rod swivel mounting		
				ÖEBK	Küresel ön eklem bağlantı Piston rod swivel mounting with spherical bearing		Nitril sızdırmazlık elemanı NBR Seal
				OEB	Orta eklem bağlantı / Central trunnion mounting	SV	Viton sızdırmazlık elemanı Viton Seal
				AB	Ayak bağlantı / Foot mounting		



ÖN FLANŞ BAĞLANTI
Front flange mounting

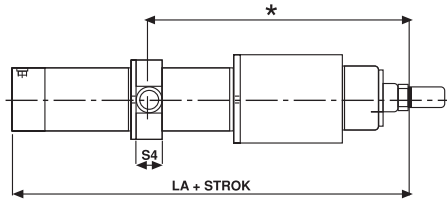


ARKA FLANŞ BAĞLANTI
Rear flange mounting

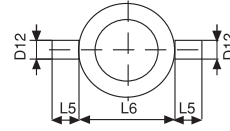


ARKA EKLEM BAĞLANTI
Swivel flange mounting

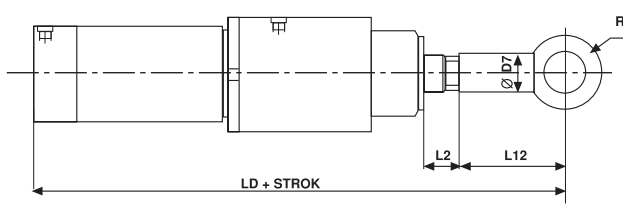
MAG	ØD0	D1	ØD2	D3	ØD4	ØD5	ØD6	ØD7	ØD8	ØD9	ØD10	ØD11	ØD12	ØD13	ØD14	D15	L1	L2	L3	L4	L5
KHS-40	22	M16X1,5	50	M52x1,5	50	67	R3/8"	25	106	125	9	20	20	11	20	M16x1,5	22	13	19	3	16
	28		60	M62x1,5																	
KHS-50	28	M20X1,5	60	M62x1,5	60	78	R1/2"	30	126	150	11	25	25	13	25	M20x1,5	28	14	24	4	20
	36		70	M74x2																	
KHS-63	36	M27x2	70	M74x2	75	93	R3/4"	38	145	175	14	32	32	13	30	M27x2	36	16	29	4	25
	45		85	M90x2																	
KHS-80	45	M33x2	85	M90x2	95	113	R3/4"	47	165	200	18	40	40	17	40	M33x2	45	18	36	4	32
	56		102	M106x2																	
KHS-100	56	M42x2	106	M112x2	115	138	R1"	58	200	240	22	50	50	21	50	M42x2	56	20	37	5	40
	70		120	M125x3																	
KHS-125	70	M48x2	132	M136x3	145	173	R1"	70	235	280	22	63	63	25	60	M48x2	63	23	37	5	50
	90		160	M165x3																	
KHS-160	90	M64x3	160	M165x3	180	218	R11/4"	90	280	330	22	80	80	30	80	M64x3	85	25	41	5	63
	110		190	M200x3																	
KHS-200	110	M80x3	200	M210x3	230	265	R11/4"	110	340	390	26	100	100	33	100	M80x3	95	30	45	5	80
	140		220	M230x3																	



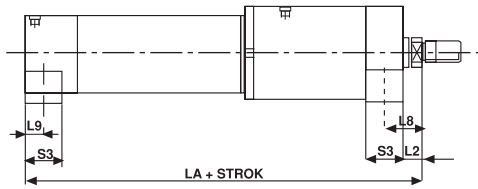
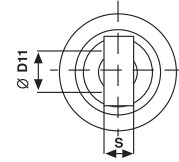
ORTA EKLEM BAĞLANTI
Trunnion mounting



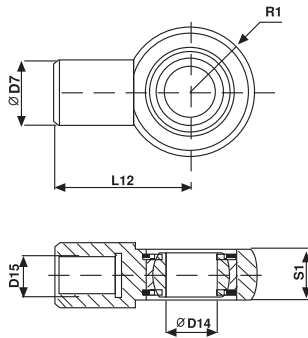
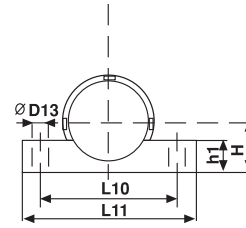
* Bu ölçü müşteri isteğine ve stroğa bağlı olarak değişir.
* This dimension will change according to the stroke and customer needs.



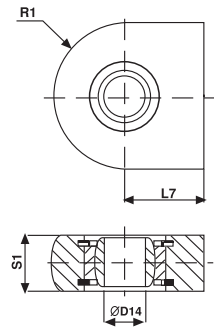
ÖN EKLEM BAĞLANTI
Piston rod swivel mounting



AYAK BAĞLANTI
Foot mounting



Küresel Ön Bağlantı
Piston rod swivel mounting with spherical bearing



Küresel Arka Bağlantı
Swivel flange mounting

MAG	L6	L7	L8	L9	L10	L11	L12	L13	LA	LB	LC	LD	H	h1	S	S1	S2	S3	S4	R	R1	SW
KHS-40	90	25	25,5	12,5	105	130	52	16	165	181	190	217	39	24	20	20	16	25	30	20	25	17 22
KHS-50	105	32	29	15	125	155	65	18	183	203	215	248	45	28	25	25	20	30	35	25	30	22 30
KHS-63	120	40	33,5	17,5	140	170	80	20	208	233	248	288	55	34	32	30	25	35	45	35	35	30 36
KHS-80	135	50	38	20	175	215	97	22	221	253	271	318	65	38	40	35	32	40	55	40	45	36 46
KHS-100	160	63	42,5	22,5	210	255	120	25	265	297	328	385	80	48	50	40	32	45	65	50	55	46 60
KHS-125	195	71	50,5	27,5	250	300	140	28	285	317	356	425	100	58	63	50	32	55	80	60	65	60 75
KHS-160	240	90	62,5	37,5	320	380	180	30	327	363	417	507	130	74	80	60	36	75	100	80	85	75 100
KHS-200	295	112	77,5	47,5	380	460	210	35	399	439	511	609	160	90	100	74	40	95	115	100	105	100 120

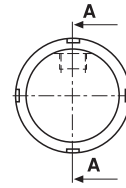
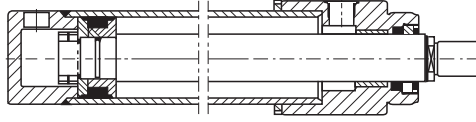
TEKNİK ÖZELLİKLER / TECHNICAL SPECIFICATIONS

ÇALIŞMA BASINCI <i>Operating Pressure</i>	: 160 BAR, 250BAR (İSTEĞE BAĞLI) <i>(Optional)</i>	MAX. PİSTON HIZI <i>Max. Piston speed</i>	: 0.5 m/s
STANDART STROKLAR <i>Standard stroke</i>	: 50, 100, 160, 200, 300, 400, 500	ÇALIŞMA SICAKLIĞI <i>Operating temperature</i>	: Min.-20°C Max.+80°C
AKIŞKAN TÜRÜ <i>Fulid Type</i>	: MINERAL YAĞLAR <i>Mineral oils</i>	VİZKOZİTE / <i>Viscosity</i>	: 5 Cst - 300 Cst
SIZDIRMAZLIK ELEMANLARI <i>Seals</i>	: NBR + PU	SİLİNDİR BORUSU <i>Cylinder tube</i>	: St 52 BK + S HONLANMIŞ <i>St 52 BK + Honed</i>
PİSTON MİLİ / <i>Piston rod</i>	: Ck 45 KROM KAPLI / <i>Ck 45 Chrome plated</i>		

KHS

(Kompakt Hidrolik Silindir)
(Compact Hydraulic Cylinder)

A-A KESİTİ / SECTION A-A



KHS - Y

(Kompakt Hidrolik Silindir Yastıklı)
(Compact Hydraulic Cylinder with cushioning)

A-A KESİTİ / SECTION A-A

