

Bobinli Valfler / Solenoid Valve

Valfler / Valves

MAG[®]



BV - 3/2 . . . - . . . - . . .

Altlık Ölçüsü Base Plate Connection
1/8"
1/4"

Bobin Gerilimi Voltage Type
12 V DC
24 V DC
24 V AC
110 V AC
220 V AC

Tip Number of Valves
1
2
3
4
5

Teknik Özellikler / Technical Specifications

Çalışma Basıncı
Operating Pressure Range : 1 ... 8 bar

Çalışma Sıcaklığı
Ambient Temperature Range : - 10 ... + 60 °C

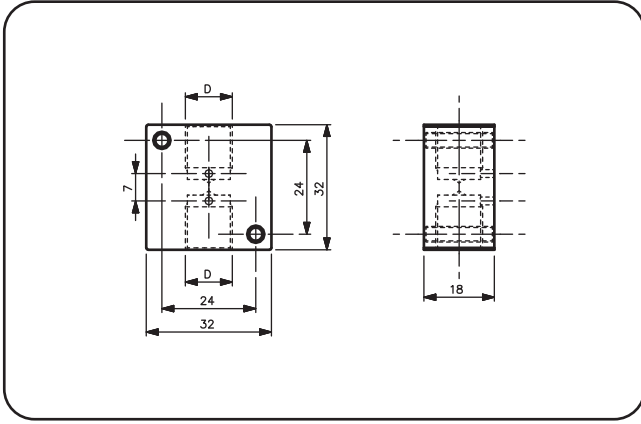
Akışkan Türü
Fluid Type : Filtre edilmiş kuru
veya yağlı hava
lubricated or unlubricated
filtered compressed air.

Fluid Type : Lubricated or unlubricated
filtered compressed air.

Koruma Derecesi
Degree of protection : IP 65 (DIN 40050)

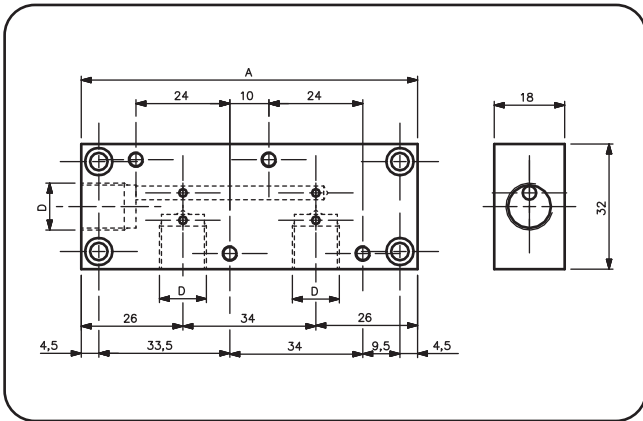
Ölçüler / Dimensions

Tekli Valf Altlığı / Single Base Plate



MAG	D
BV-3/2-1/4-1	R 1/4"
BV-3/2-1/8-1	R 1/8"

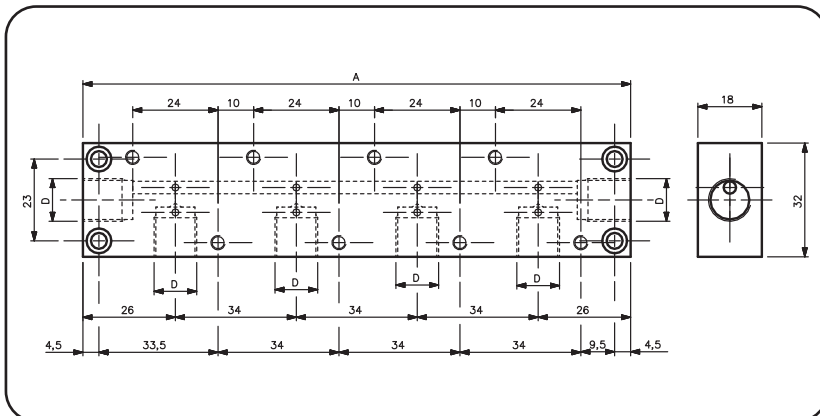
İkili Valf Altlığı / Double Base Plate



MAG	A	D
BV-3/2-1/4-2	86	R 1/4"
BV-3/2-1/4-3	120	R 1/4"

Dörtlü, Beşli, Altılı ve Yedili Valf Altlığı

Base Plate For 4,5,6 and 7 Valves



MAG	A	D
BV-3/2-1/4-4	154	R 1/4"
BV-3/2-1/4-5	188	R 1/4"
BV-3/2-1/4-6	222	R 1/4"
BV-3/2-1/4-7	256	R 1/4"