

# Alüminyum Profilli Pnömatik Silindir

## Double Acting Aluminum Profile Pneumatic Cylinder

Silindirler / Cylinders

# MAG®



**(CETOP RP 43P'ye uygun)**  
(according to CETOP RP 43P)

• **NS** • - • • • - • • • - • • •

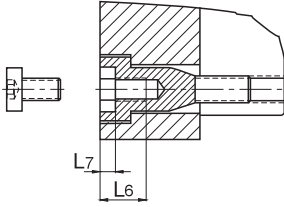
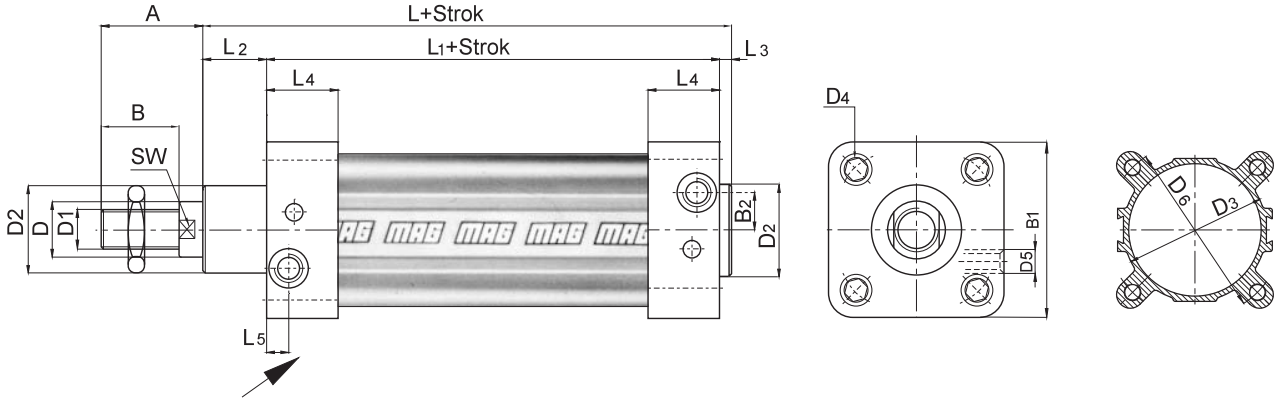
Silindir Kodu / Cylinder Code	
ANS	Çift Etkili / Double acting
ANSY	Cift Etkili Yastıklı Double acting with cushioning
ANST	Tek Etkili / Single acting
MNSY	Cift Etkili Manyetik Yastıklı Double acting with cushioning and magnetic
MNS	Cift Etkili Manyetik Double acting and magnetic

Piston Çapı Piston Diameter
32,40,50,63, 80,100

Standart Stoklar Standart Strokes
50,100,160,200 300,400,500

Bağlantı Şekli / Mountings	
AB	Ayak Bağlantı / Foot mounting
FB	Flanş Bağlantı / Flange mounting
EB	Eklem Bağlantı / Swivel flange mounting
EYB	Eklem Yer Bağlantı Swivel flange mounting with clevis foot
ÇB	Çatal Bağlantı / Piston rod clevis mounting

# Ölçüler / Dimensions

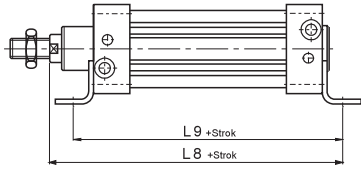


Yastıklama Boyu Cushioning Stroke	
NSY - 32 - ...	19
NSY - 40 - ...	21
NSY - 50 - ...	23
NSY - 63 - ...	23
NSY - 80 - ...	30
NSY - 100 - ...	30

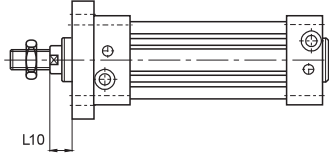
TEKNİK ÖZELLİKLER / TECHNICAL SPECIFICATIONS	
Silindir Gövdesi / Cylinder Tube	Alüminyum / Aluminum
Silindir Kapakları / Cylinder End Caps	Al. Enjeksiyon Döküm / Aluminum
Piston Mili / Piston Rod	CK 45 Krom Kaplı / CK 45 Chrome Plated
Sızdırmazlık Elemanları / Seals	NBR, Viton
Boğaz Keçesi / Rod Seal	Poliüretan / Polyurethane
Piston Keçesi / Piston Seal	NBR
O-Ring / O - Rings	NBR
Max. Çalışma Basıncı Max. Operating Pressure	10 BAR
Çalışma Sıcaklığı Temperature Range	-20°C, +80°C

MAG	A	B	B <sub>1</sub>	B <sub>2</sub>	B <sub>3</sub>	B <sub>4</sub>	B <sub>5</sub>	B <sub>6</sub>	B <sub>7</sub>	C	C <sub>1</sub>	C <sub>2</sub>	C <sub>3</sub>	C <sub>4</sub>	D ø	D <sub>1</sub>	D <sub>2</sub> ø	D <sub>3</sub> ø
ANS-32-...	30	20	45	0	32	45	26	54	10	4	10	8	8	20	12	M10x1.25	30	37
ANS-40-...	34	24	54	4.5	36	52	28	62	12	5	10	9	10	24	16	M12x1.25	34	45
ANS-50-...	44	32	65	5.5	45	60	32	70	16	6	12	11	12	32	20	M16x1.5	38.6	55
ANS-63-...	44	32	80	13	50	70	40	82	16	6	15	12	12	32	20	M16x1.5	42	68
ANS-80-...	54	40	96	16	63	90	50	102	20	8	18	14	14	40	25	M20x1.5	48	86
ANS-100-...	53	40	126	16	75	110	60	126	20	8	18	15	15	40	25	M20x1.5	50	108

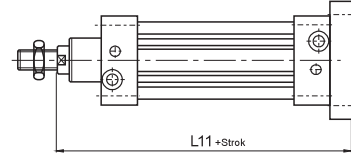
MAG	D <sub>4</sub>	D <sub>5</sub>	D <sub>6</sub> ø	D <sub>7</sub> ø	D <sub>8</sub> ø	D <sub>9</sub> ø	D <sub>10</sub> ø	D <sub>11</sub> ø	D <sub>12</sub> ø	E	E <sub>1</sub>	E <sub>2</sub>	E <sub>3</sub>	E <sub>4</sub>	E <sub>5</sub>	E <sub>6</sub>	E <sub>7</sub>	E <sub>8</sub>	E <sub>9</sub>	F	F <sub>1</sub>
ANS-32-...	M5	R1/8"	46	7	10	10	5.5	18	10	32	24	22	18	31	38	51	40	50	30	77	64
ANS-40-...	M5	R1/4"	56	9	12	10	5.5	22	12	38	28	25	22	35	41	54	50	62	37	90	72
ANS-50-...	M6	R1/4"	68	9	12	11	6.6	28	16	42	32	27	30	45	50	65	65	82	50	110	90
ANS-63-...	M6	R3/8"	84	9	16	11	6.6	28	16	50	35	35	35	50	52	67	65	82	50	125	100
ANS-80-...	M8	R3/8"	100	12	16	15	9	36	20	60	43	38	40	60	66	86	85	105	60	154	126
ANS-100-...	M8	R1/2"	132	14	20	15	9	36	20	57	43	43	50	70	76	96	85	105	60	186	150



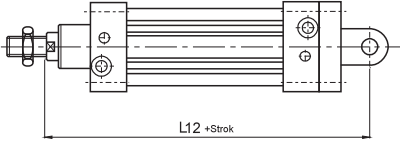
**Ayak bağlantı**  
Foot mounting



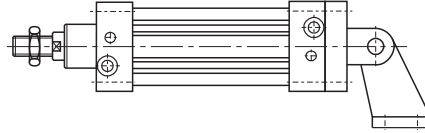
**Ön flaş bağlantı**  
Front flange mounting



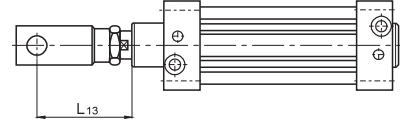
**Arka flaş bağlantı**  
Rear flange mounting



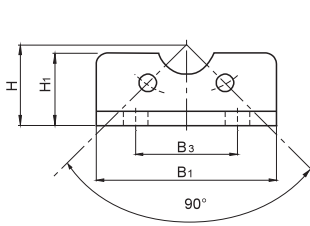
**Eklem bağlantı**  
Swivel flange mounting



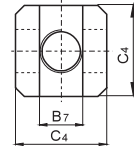
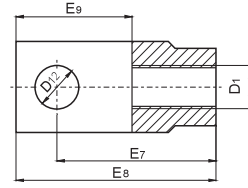
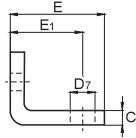
**Eklem yer bağlantı**  
Swivel flange mounting with clevis foot



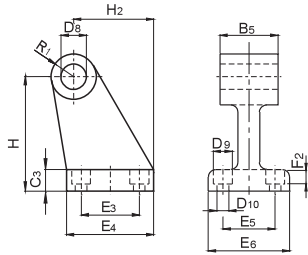
**Çatal bağlantı**  
Piston rod clevis mounting



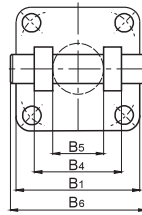
**AB: Ayak bağlantı**  
Foot mounting



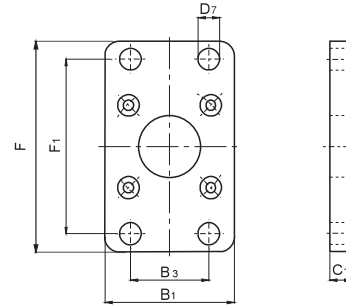
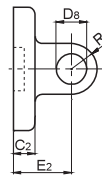
**ÇB: Çatal bağlantı**  
Piston rod clevis mounting



**YB: Yer bağlantı**  
Clevis foot



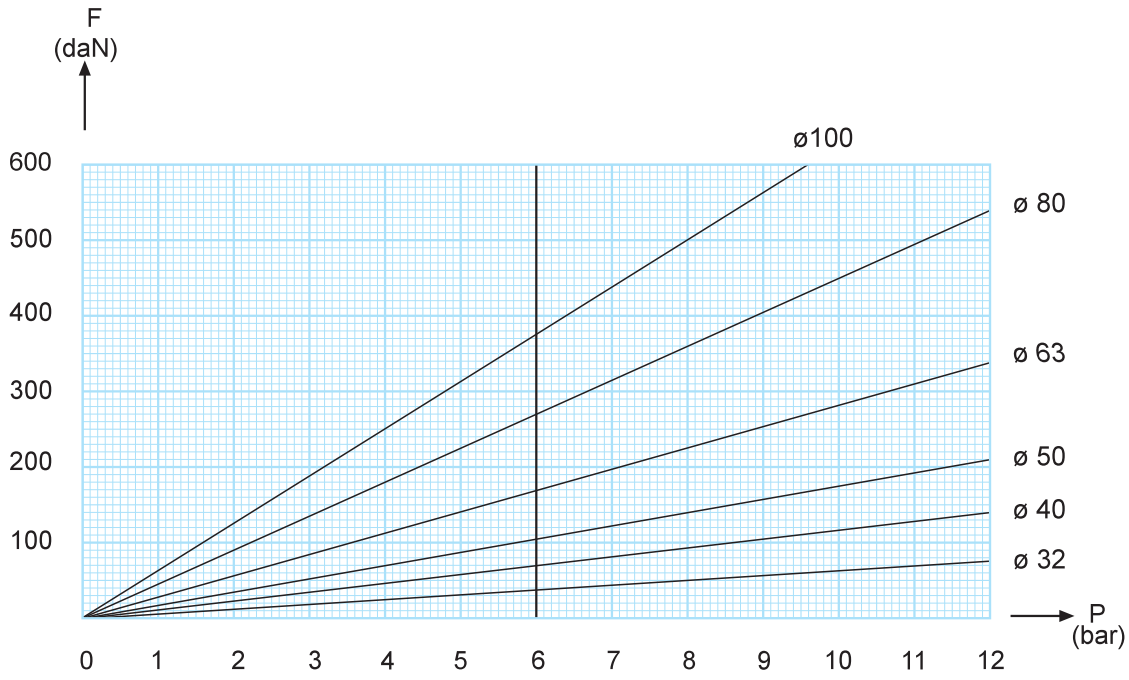
**EB: Eklem bağlantı**  
Swivel flange mounting



**FB: Flaş bağlantı**  
Flange mounting

F <sub>2</sub>	H	H <sub>1</sub>	H <sub>2</sub>	L	L <sub>1</sub>	L <sub>2</sub>	L <sub>3</sub>	L <sub>4</sub>	L <sub>5</sub>	L <sub>6</sub>	L <sub>7</sub>	L <sub>8</sub>	L <sub>9</sub>	L <sub>10</sub>	L <sub>11</sub>	L <sub>12</sub>	L <sub>13</sub>	R	R <sub>1</sub>	SW
5.7	32	24	27.5	114	94	16	4	25.5	9	13	5	144	142	16	130	142	56	10	10	10
5.7	36	25	30.5	130.5	105	20	5	23.5	11.5	13	5	163	161	20	145	160	68	13	11	13
6.8	45	32	40.5	136	106	25	5	23.5	11.5	13	5	175	170	25	155	170	84	16	13	17
6.8	50	36	44.5	149	115	28	6	28.5	14	13	5	190	185	25	170	190	84	18	15	17
9	63	47	57	164	124	34	6	27.5	14	16.5	6	215	210	30	190	210	108	18	15	22
9	71	54	65	181	134	40	7	31.5	16	16.5	6	230	220	35	205	230	107	23	19	22

## İtme kuvveti / Compression force : (daN)



## Ağırlık / Weight : (kg)

Silindir Çapı Piston diameter (Ø mm)	Strok=0 At 0 Stroke (kg)	Her 10 mm. strok için Weight per 10 mm. stroke	AB	FB	EB	YB
32	0.830	0.025	0.140	0.080	0.110	0.160
40	0.940	0.037	0.220	0.110	0.180	0.210
50	1.320	0.047	0.380	0.190	0.260	0.420
63	2.120	0.058	0.580	0.340	0.460	0.540
80	2.715	0.088	1.100	0.520	0.700	0.880
100	4.467	0.145	1.480	0.900	1.280	1.370