

Çelik Gövdeli Pnömatik Silindir

Silindirler

MAG®



(CETOP RP 43P'ye uygun)

NS - -

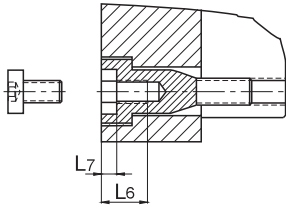
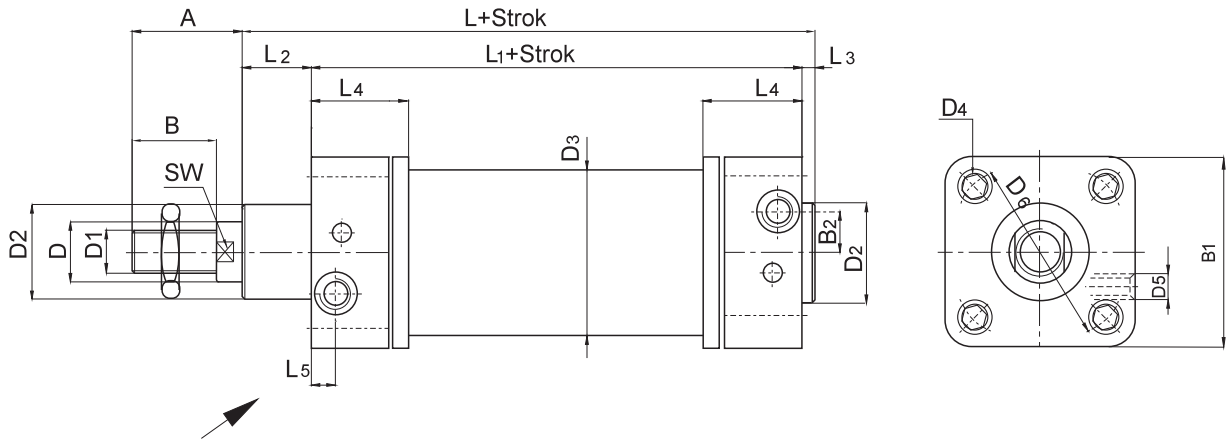
SİLİNDİR KODU	
NS	Çift Etkili
NSY	Çift Etkili Yastıklı
NST	Tek Etkili

PISTON ÇAPI
32,40,50,63,80,100

STANDART STROKLAR
50,100,160,200 300,400,500

BAĞLANTI ŞEKLİ	
AB	Ayak Bağlantı
FB	Flanş Bağlantı
EB	Eklem Bağlantı
EYB	Eklem Yer Bağlantı
ÇB	Çatal Bağlantı

Ölçüler

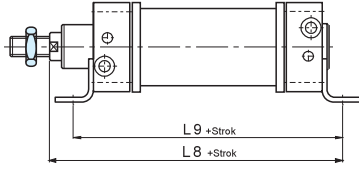


Yastıklama boyu	
NSY - 32 - ...	19
NSY - 40 - ...	21
NSY - 50 - ...	23
NSY - 63 - ...	23
NSY - 80 - ...	30
NSY - 100 - ...	30

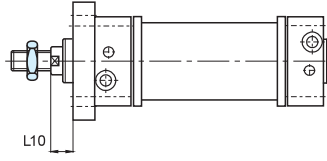
TEKNİK ÖZELLİKLER	
SİLİNDİR GÖVDESİ	Çelik
SİLİNDİR KAPAKLARI	Al. Enjeksiyon Döküm
SİLİNDİR MİLİ	CK 45 Krom Kaplı
BOĞAZ KEÇESİ	Poliüretan
PİSTON KEÇESİ	NBR
O-RİNGLER	NBR
MAX. ÇALIŞMA BASINCI	10 BAR
ÇALIŞMA SICAKLIĞI	-20°C, +80°C

MAG	A	B	B ₁	B ₂	B ₃	B ₄	B ₅	B ₆	B ₇	C	C ₁	C ₂	C ₃	C ₄	D ø	D ₁	D ₂ ø	D ₃ ø
NS-32-...	30	20	45	0	32	45	26	54	10	4	10	8	8	20	12	M10x1,25	30	37
NS-40-...	34	24	54	4,5	36	52	28	62	12	5	10	9	10	24	16	M12x1,25	35	45
NS-50-...	44	32	65	5,5	45	60	32	70	16	6	12	11	12	32	20	M16x1,5	40	55
NS-63-...	44	32	80	13	50	70	40	82	16	6	15	12	12	32	20	M16x1,5	42	68
NS-80-...	54	40	96	16	63	90	50	102	20	8	18	14	14	40	25	M20x1,5	48	86
NS-100-...	53	40	126	16	75	110	60	126	20	8	18	15	15	40	25	M20x1,5	50	108

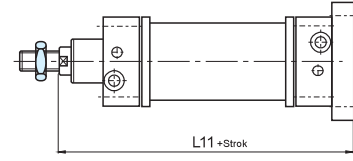
MAG	D ₄	D ₅	D ₆ ø	D ₇ ø	D ₈ ø	D ₉ ø	D ₁₀ ø	D ₁₁ ø	D ₁₂ ø	E	E ₁	E ₂	E ₃	E ₄	E ₅	E ₆	E ₇	E ₈	E ₉	F	F ₁
NS-32-...	M5	R1/8"	46	7	10	10	5,5	18	10	32	24	22	18	31	38	51	40	50	30	77	64
NS-40-...	M5	R1/4"	56	9	12	10	5,5	22	12	38	28	25	22	35	41	54	50	62	37	90	72
NS-50-...	M6	R1/4"	68	9	12	11	6,6	28	16	42	32	27	30	45	50	65	65	82	50	110	90
NS-63-...	M6	R3/8"	84	9	16	11	6,6	28	16	50	35	35	35	50	52	67	65	82	50	125	100
NS-80-...	M8	R3/8"	100	12	16	15	9	36	20	60	43	38	40	60	66	86	85	105	60	154	126
NS-100-...	M8	R1/2"	132	14	20	15	9	36	20	57	43	43	50	70	76	96	85	105	60	186	150



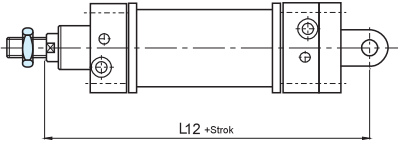
Ayak bağlantı



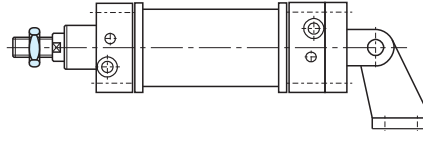
Ön flanş bağlantı



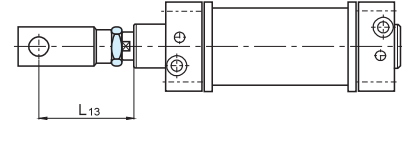
Arka flanş bağlantı



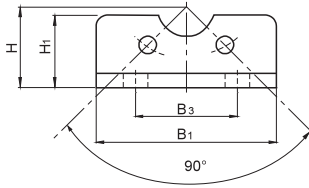
Eklem bağlantı



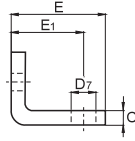
Eklem yer bağlantı



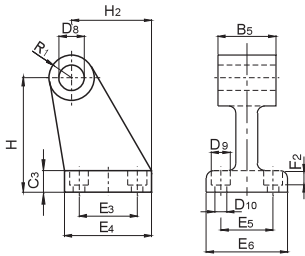
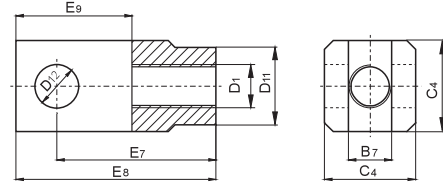
Çatal bağlantı



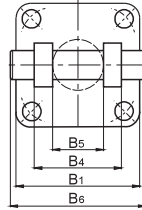
AB: Ayak bağlantı



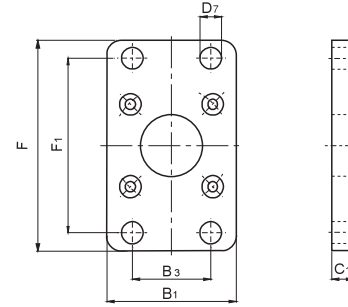
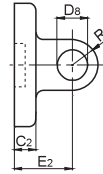
ÇB: Çatal bağlantı



YB: Yer bağlantı



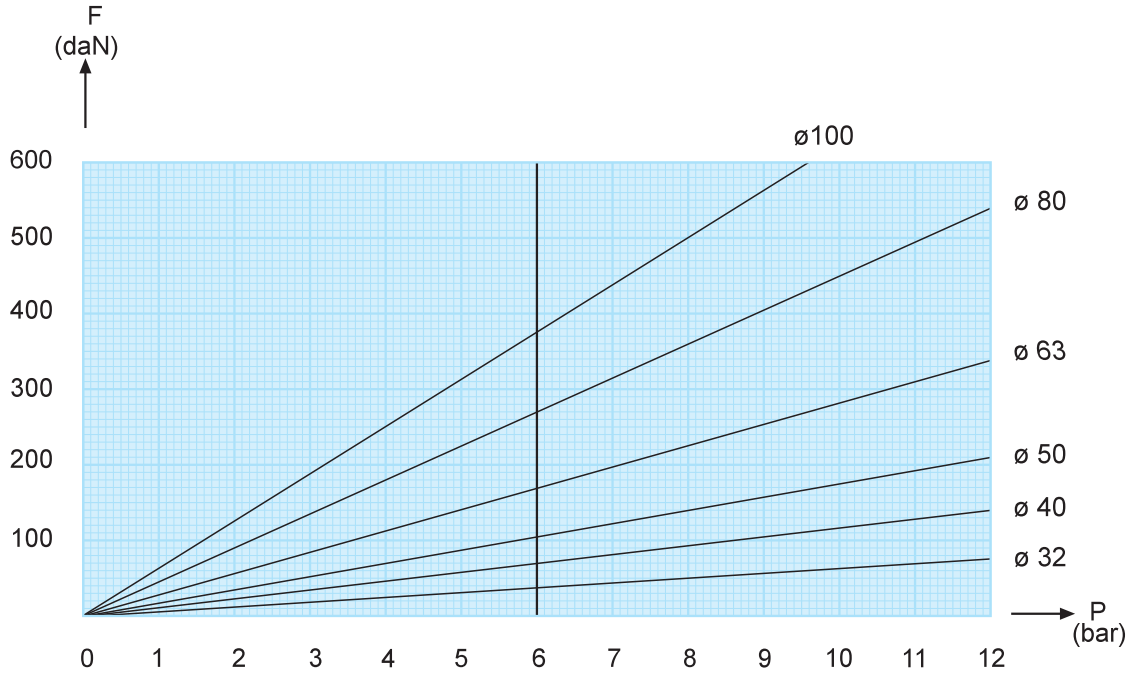
EB: Eklem bağlantı



FB: Flanş bağlantı

F ₂	H	H ₁	H ₂	L	L ₁	L ₂	L ₃	L ₄	L ₅	L ₆	L ₇	L ₈	L ₉	L ₁₀	L ₁₁	L ₁₂	L ₁₃	R	R ₁	SW
5.7	32	24	27.5	114	94	16	4	38	9	13	5	144	142	16	130	142	56	10	10	10
5.7	36	25	30.5	130.5	105	20	5	38	11.5	13	5	163	161	20	145	160	66	13	11	13
6.8	45	32	40.5	136	106	25	5	38	11.5	13	5	175	170	25	155	170	84	16	13	17
6.8	50	36	44.5	149	115	28	6	45	14	13	5	190	185	25	170	190	84	18	15	17
9	63	47	57	164	124	34	6	48	14	16.5	6	215	210	30	190	210	108	18	15	22
9	71	54	65	181	134	40	7	55	16	16.5	6	230	220	35	205	230	107	23	19	22

İtme kuvveti : (daN)



$$F = p \times A - R$$

F : itme kuvveti (daN)
p : basınç (bar)
A : alan (cm)²
R : sürtünme kuvveti (daN)

Ağırlık : (kg)

Silindir çapı	Strok=0 da	Her10mm. strok için	AB	FB	EB	YB
32	0,970	0,030	0,140	0,080	0,110	0,160
40	1,150	0,042	0,220	0,110	0,180	0,210
50	1,675	0,057	0,380	0,190	0,260	0,420
63	2,685	0,065	0,580	0,340	0,460	0,540
80	3,505	0,099	1,100	0,520	0,700	0,880
100	6,355	0,168	1,480	0,900	1,280	1,370